

## Arranging a visit

If you would like to organise a visit to our Heritage Centre or would like further information, please email us at: [fonfaoutreach@gmail.com](mailto:fonfaoutreach@gmail.com) We will be delighted to discuss your requirements and make the necessary arrangements with you. Please note that we ask for the donation to be paid before the booking is confirmed.

As the Centre is entirely run by volunteers, we need to check their availability before confirming the date and time of your visit.

We hope to see you soon!



Friends of the New Forest Airfields  
Registered Charity No. 1063648  
<https://fonfa.co.uk>



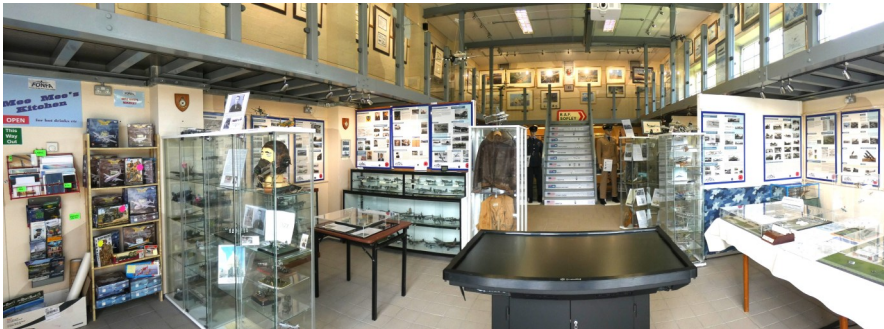
***Group Visits by schools and  
youth groups to the  
Aviation Heritage Centre.  
A Guide for Group Organisers***

## About FONFA

Friends of the New Forest Airfields (FONFA) is committed to reserving and sharing the aviation heritage of the New Forest and as part of our outreach programme we welcome small group visits to our aviation Heritage Centre which is located on the outskirts of Bransgore. We welcome group visits from clubs and societies, retirement living accommodation and care homes and schools and other education establishments.

Our Heritage Centre is housed in the last remaining building of the former RAF Sopley Camp. It contains many models and dioramas, artefacts, uniforms, pilot stories and interactive displays with maps, photographs and video clips. The mezzanine balcony contains a display of aviation prints, many of which have been signed by the pilots and crew.

The nature of this historic building means that there are unfortunately some access limitations, particularly to the mezzanine floor which can only be accessed by a flight of stairs. There is one unisex accessible toilet on the ground floor.



## Health & Safety

FONFA has full Public Liability Insurance and will provide adequate trained fire marshals for your visit. We ask you to confirm that you also hold appropriate insurance cover and have prepared a suitable risk assessment for a visit to a museum style of venue.

## During Your Visit

Your group will be welcomed by our volunteers who are aviation historians with a deep knowledge of the aviation heritage of the New Forest. Your group will receive an orientation briefing to help them understand the military context and scope of the heritage centre together with its layout so that each individual can explore the many exhibits at their own pace and based on their degree of mobility. Our volunteers will be on hand to answer questions or provide additional explanation.

The normal duration for a visit is 2 hours.

## Cost of Your Visit

As a charity, FONFA's only source of income is through donations and Heritage Centre entrance fees. We make no charge for school or other youth group visits, but welcome any donation offered.

As we are required to provide a minimum of two fire Wardens to comply with our certification, we ask for a minimum group size of 8 visitors, plus staff and helpers. The maximum group size is 30 visitors plus staff and helpers.